



WeCarbon

EFFICIENT AND PROFESSIONAL CO₂ MANAGEMENT

Precisely measure operational emissions

Carbon dioxide is one of the most significant figures in sustainability management. It has broad public awareness and is also required by most sustainability standards as well as relevant ratings and audits. WeCarbon not only captures your CO₂ emissions securely and transparently, but also automatically calculates the CO₂ equivalents of all emitted greenhouse gas. The data obtained can be directly integrated into existing reporting standards, such as GRI. This makes it considerably more straightforward to identify and evaluate actual operational emissions.

Common greenhouse gas accounting standards, such as the GHG Protocol or DEFRA are available in the system. Further standards can be flexibly programmed. Fee-based databases, such as ecoinvent, can also be uploaded.

Flexible settings suited to requirements

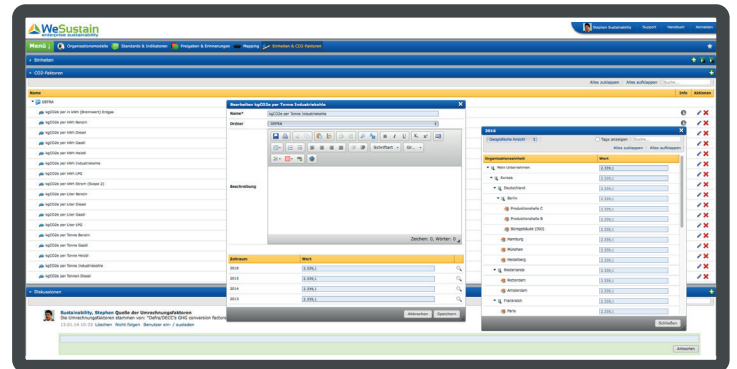
The relevant CO₂ factors can be adjusted over time for a specific location or region. This, for example, enables large electricity producers, to track their greenhouse emissions, not only at country level but also broken down to operational level. Various leading energy providers, manufacturing enterprises and companies in other industrial sectors successfully use WeCarbon for operational management of their company-wide CO₂ emissions.

Example of a customer application:

Our customer - a Swiss energy and infrastructure firm - uses the WeCarbon ESG module to calculate its carbon footprint. Amongst other facilities, the company operates energy production plants in which various processes are used for energy generation. Individual calculation methods are used to identify the operational CO₂ balance for each method, e.g. to correctly convert the emissions using a CO₂ equivalent. Ultimately, this leads to complexity that can hardly be handled sufficiently using an Excel spreadsheet. With the help of the ESG module, the quality and efficiency of data collection and calculation has been significantly enhanced. The now de-centralized data collection conducted by multiple users and the automatic calculation of CO₂ equivalents both saves time and reduces susceptibility to errors. WeCarbon also makes it possible to call up location-specific carbon footprints at any time. Within the the already implemented WeSustain software environment, **WeCore** uses data collected in this manner to create reports.



WeCarbon helps you to reliably measure your CO₂ emissions and calculate your CO₂ equivalents (thanks to pre-configured CO₂ emissions factors).



- >> AUTOMATIC CALCULATION OF CO₂ EQUIVALENTS
- >> ALREADY CONTAINS FACTORS FROM COMMON CO₂-DATABASES
- >> UPLOAD OPTION FOR FEE-BASED DATABASES
- >> LOCATION-SPECIFIC ADJUSTMENT OF CO₂ EMISSIONS FACTORS
- >> EASILY INTEGRATABLE WITH EXISTING REPORTING STANDARDS SUCH AS GRI



WeCore: The heart and foundation of the WeSustain ESG software

