



# WeCore

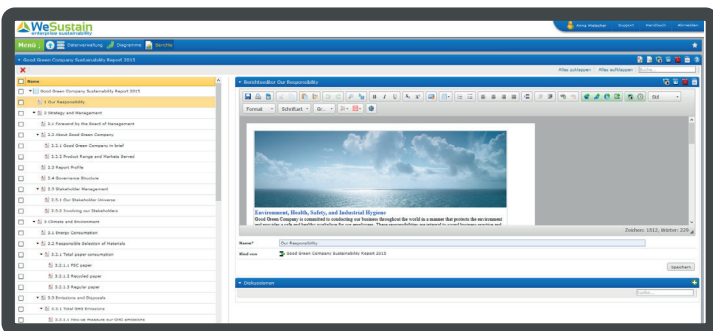
## THE HEART OF THE WESUSTAIN ESM SOFTWARE

### Precisely map structures and processes

The settings in WeCore ensure that the software slots smoothly into your company – without the need for costly, time-consuming programming. All structural parameters (such as organization structure, reporting standards and KPIs, units, languages, usage rights, etc.) and required processes (work steps, duties, approvals, representatives, etc.) are recorded and defined here. The organizational model is first mapped during the introduction process. You can adapt this easily and flexibly at a later point. The organizational model can be displayed in different views, such as geographical, functional or organizational, with a click of the mouse. Key indicators – from basic water consumption to freely-definable formulas, such as CO<sub>2</sub>/m<sub>2</sub> of office space, are automatically calculated for the overall organizational structure and for all views. Targets can be individually set and tracked.

### Reporting functionality – at its best

WeCore also provides a comprehensive range of reporting functions, including for complete CSR or ISO reports. The data for these standard reports is recorded in WeData. This ensures an efficient drafting process, guarantees that a uniform structure is applied to all reports, and takes the company's individual corporate identity into consideration. With WeCore, individual and presentational ad hoc reports with selected indicators can be generated at any time. All reports, including any graphics, can be exported in a range of output formats (MS Word, PDF or HTML) depending on the desired objective. In addition to generating reports, analyses can be conducted and company-wide benchmarks set. This makes it possible to compare multiple locations, countries and/or periods. All customary reporting standards (GRI, DNK, SDGs, etc.) are already set in the system, and constantly updated by WeSustain.



Additional standards and individual KPIs can be freely defined, fine-tuned and allocated to organizational units.

### Rapid commissioning and easy operation

Existing legacy data can be easily integrated via an Excel upload, making it possible to produce progression graphs or conduct plausibility checks when entering new values. WeSustain also provides a comprehensive rights-and-roles concept, which regulates individual access, sharing and editing authorizations for specific units or users. Freely definable work-flows, email reminders and sharing settings make it possible to set clear processes and responsibilities for each task and indicator. Thanks to the intuitive, user-specific interface, users quickly become accustomed to the software – without the need for extensive training. In the end, you will have an easy-to-administer system perfectly suited to your requirements.

**The WeCore module is the heart of our ESM software. It maps all key settings, necessary system requirements and a detailed project schedule.**

- >> THE ESSENTIAL COMPONENTS FOR PROFESSIONAL SOFTWARE-BASED CSR MANAGEMENT
- >> INDIVIDUAL REPORTS AT THE TOUCH OF A BUTTON
- >> INTEGRATION INTO EXISTING IT LANDSCAPE
- >> ON YOUR MARK – SETUP – GO: START STRAIGHT AWAY WITH WESUSTAIN!



*WeData: ESM module for efficient data collection and transparent data management*

