



WeData

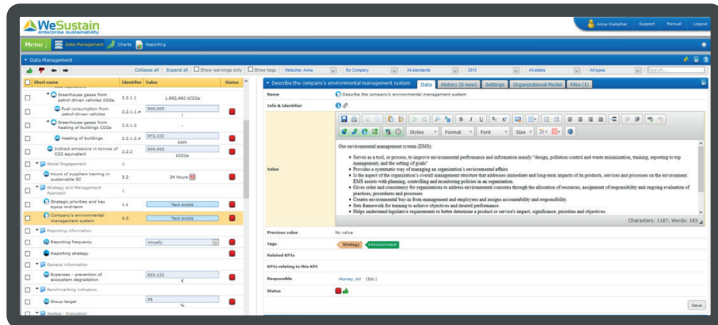
IMPROVE DATA COLLECTION AND MANAGEMENT

Flexible data management

WeData is the comprehensive data collection platform in the WeSustain software. The module enables central collection of quantitative and qualitative indicators - independent of location or organizational level. Time-intensive and error-prone sending, tracking and collating of data using email and Excel is a thing of the past. The module's integrated plausibility checks guarantee highest data quality.

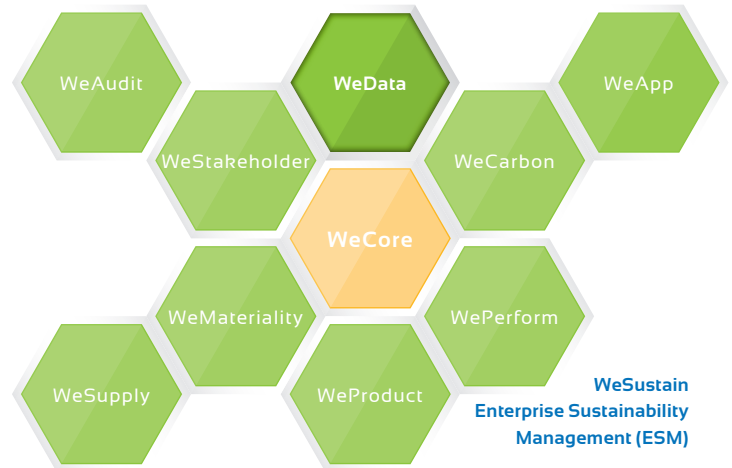
Data collection made easy

An optimized data collection process is characterized by clearly-defined responsibilities, transparent workflows and status displays that are accessible at all times. Thanks to its flexible rights and roles concept, WeData enables you to allocate access authorizations and restrictions. With the traffic light display system, you have the opportunity to check the current status whenever you want. Automatic reminders and the discussion platform further support intra-organizational collaboration.

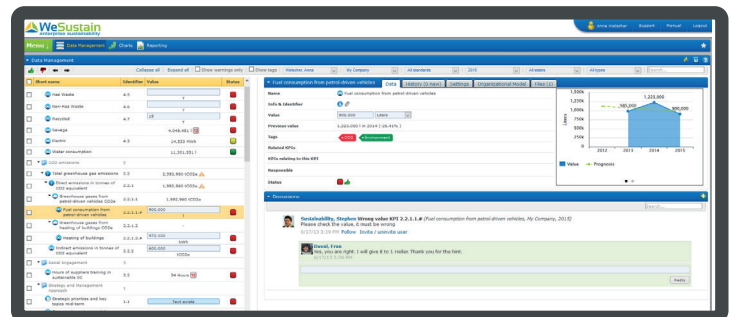


Standard mapping - preset and individual

Numerous common frameworks and indicators for CSR reporting are already programmed in the system and are constantly maintained and updated by WeSustain. Additional – and individual – standards and sustainability indicators can be flexibly defined and integrated at any time. All contained KPIs and standards are provided with corresponding explanatory information. In addition, previously collected data can also be re-used for standards or reports and evaluated in time series.



WeData ensures a transparent and efficient data collection processes. This saves you a considerable amount of time, as important frameworks (such as GRI, DNK, SDGs, etc.) incl. comprehensive plausibility checks are pre-configured.



- >> QUALITATIVE AND QUANTITATIVE DATA COLLECTION
- >> ALWAYS UP-TO-DATE CENTRAL DATABASE
- >> SIGNIFICANTLY REDUCED ERROR RATE THANKS TO COMPREHENSIVE PLAUSIBILITY CHECKS
- >> FREELY DEFINABLE QUESTIONNAIRES THAT CAN BE ADJUSTED AT ANY TIME
- >> COMPREHENSIVE RIGHTS AND ROLES CONCEPT FOR CLEARLY-DEFINED RESPONSIBILITIES

